

How to Change Wi-Fi network name (SSID) and the Password:

- **For DSL Users:**

1. Technicolor V1 /Thomson:

- connect to the WiFi network of your modem
- Open any browser, and enter the gateway address (the default one is 192.168.1.254)
- Click on home network → WLAN:

Thomson TG585 v8

THOMSON

Logged in as: Administrator

Home > Home Network

Home Network

Wireless

WLAN: Thomson7BCECC (65Mbps)

Ethernet

ethport1 (100Mbps) Unknown-00-1b-38-13-64-d8

ethport2 (100Mbps)

ethport3 (100Mbps)

ethport4 (100Mbps)

- Configure:

THOMSON

Logged in as: Administrator

Home > Home Network > Interfaces > WLAN: Thomson7BCECC

Overview | Details | **Configure**

Wireless Access Point - Thomson7BCECC


- **Configuration**
 - Interface Enabled: Yes
 - Physical Address: 08:76:FF:7B:CE:CC
 - Network Name (SSID): Thomson7BCECC
 - Interface Type: 802.11b/g/n
 - Actual Speed: 65 Mbps
 - Band: 2.4G Hz
- **Security**
 - Allow New Devices: New stations are allowed (automatically)
 - Security Mode: none

- Network Name
- Encryption Key

Home > Home Network > Interfaces > WLAN:Thomson7BCECC Overview | Details | Configure

Wireless Access Point - Thomson7BCECC

- Configuration**
 - Interface Enabled:
 - Physical Address: 08:76:FF:7B:CE:CC
 - Network Name (SSID): Thomson7BCECC
 - Interface Type: 802.11b/g/n
 - Actual Speed: 65 Mbps
 - Band: 2.4G Hz
 - Channel Selection: Automatic
 - Region: USA
 - Channel: 11
 - Allow multicast from Broadband Network:
- Security**
 - Broadcast Network Name:
 - Allow New Devices: New stations are allowed (automatically)
 - Encryption:
 - Disabled
 - Use WEP Encryption
 - Use WPA-PSK Encryption

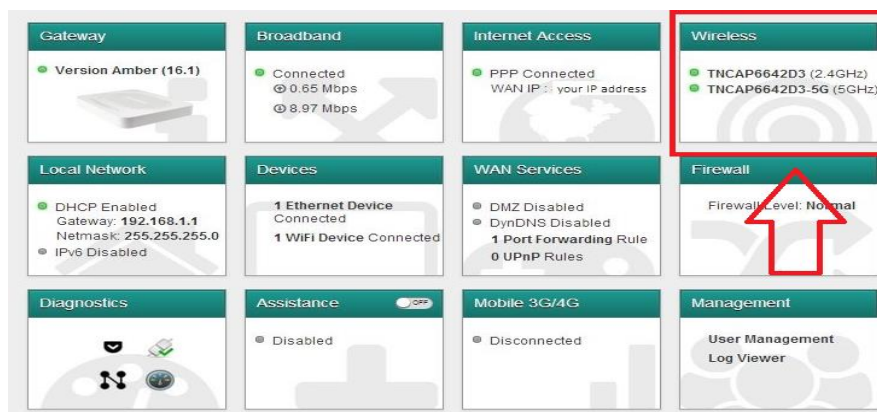


2. Technicolor V2:

- connect to the WiFi network of your modem
- Open any browser, and enter the gateway address (the default one is 192.168.1.1)
- Username : admin / Password : access key on the back of the modem

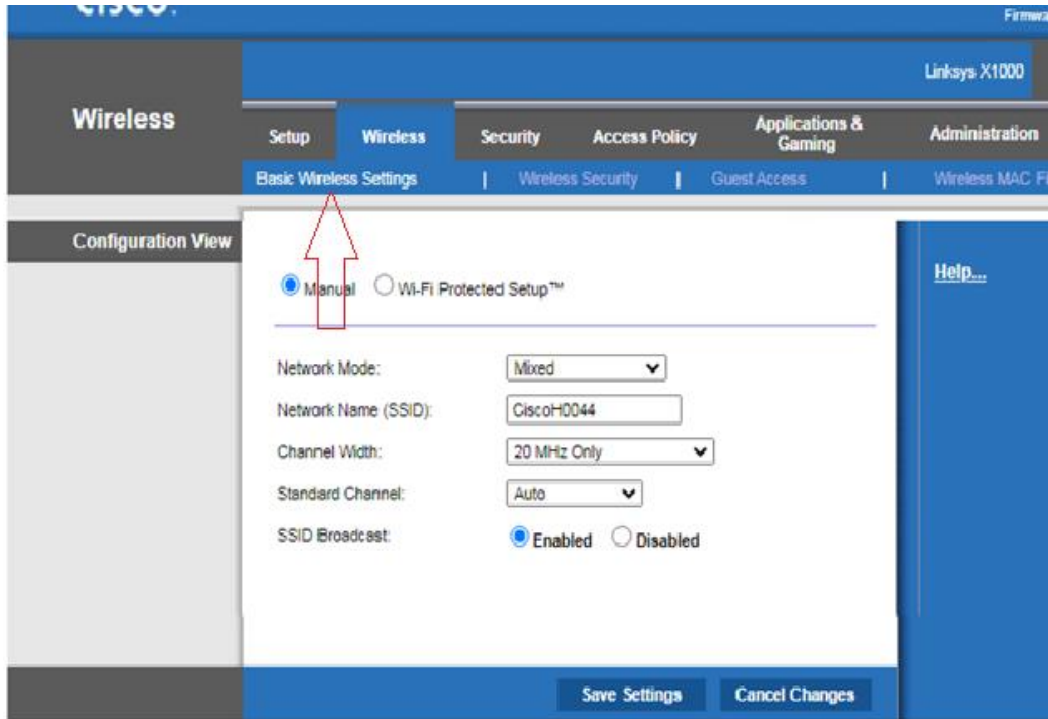


- press on wireless and change WiFi network name (SSID) and the Password :

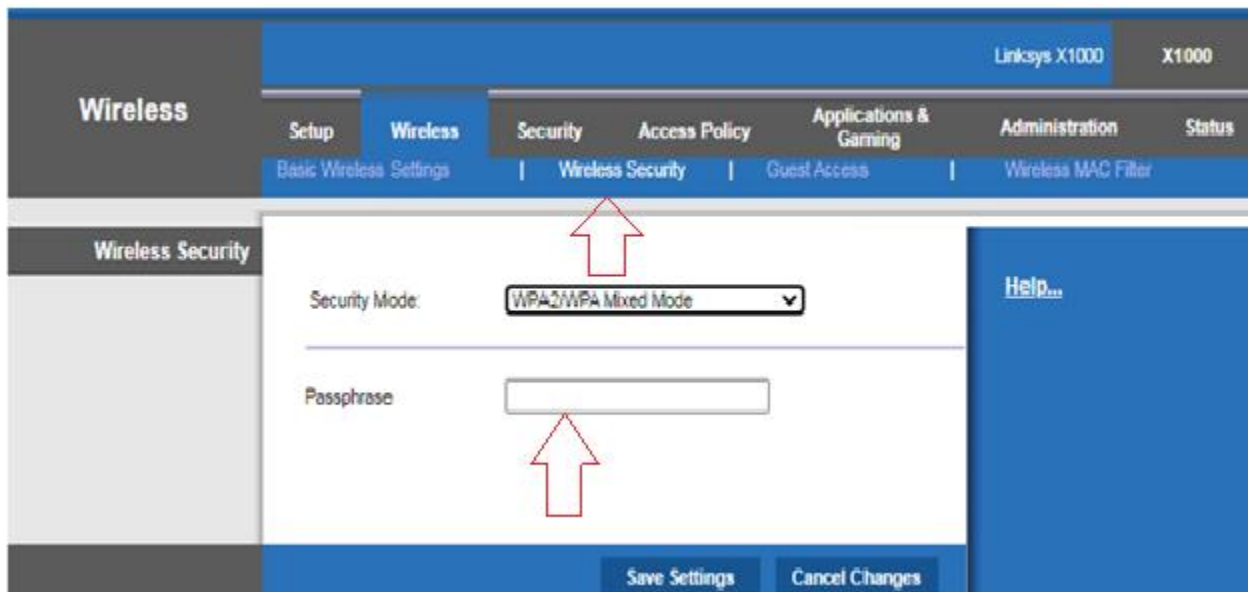


3. LinkSys

- connect to the WiFi network of your modem
- Open any browser, and enter the gateway address (the default one is 192.168.1.1)
- Username : admin / admin : access key on the back of the modem
- Wireless (Basic Wireless Setting): to change the Wi-Fi Name

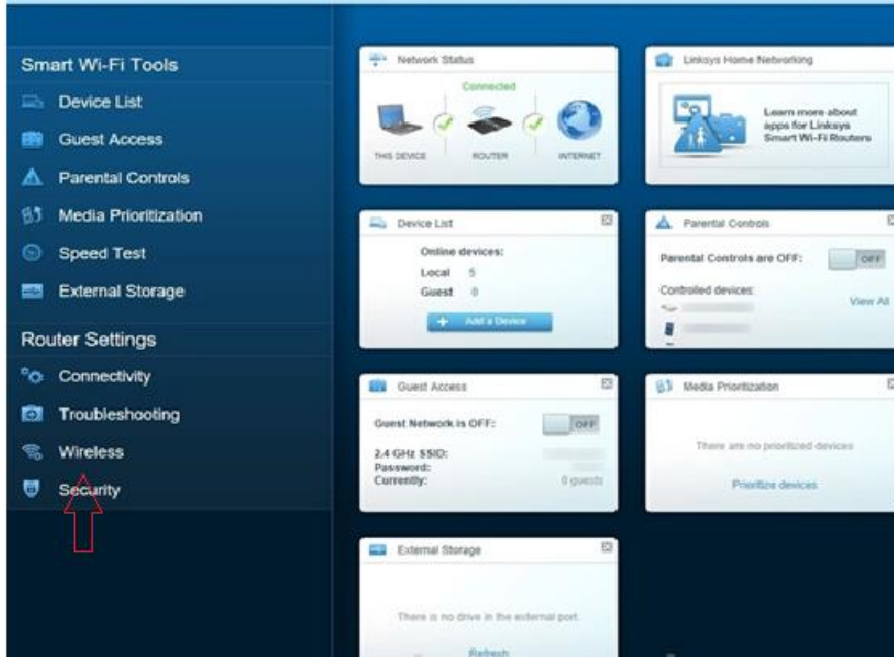


- Wireless (Wireless Security): to change Wi-Fi Password

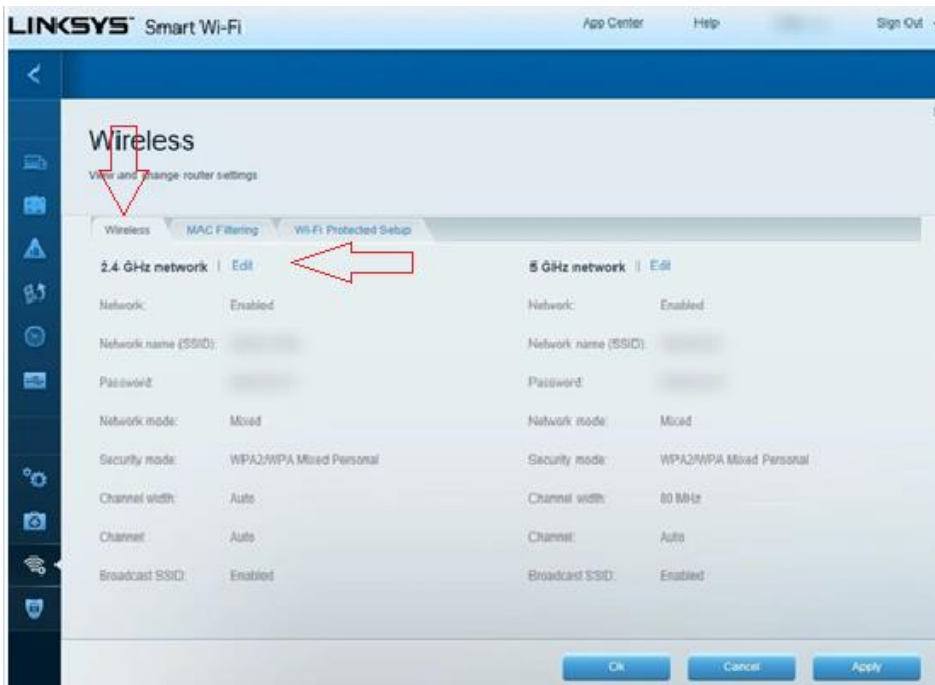


4. Linksys

- connect to the Wi-Fi network of your modem
- Open any browser, and enter the gateway address (the default one is 192.168.1.1)
- Username : admin / admin : access key on the back of the modem

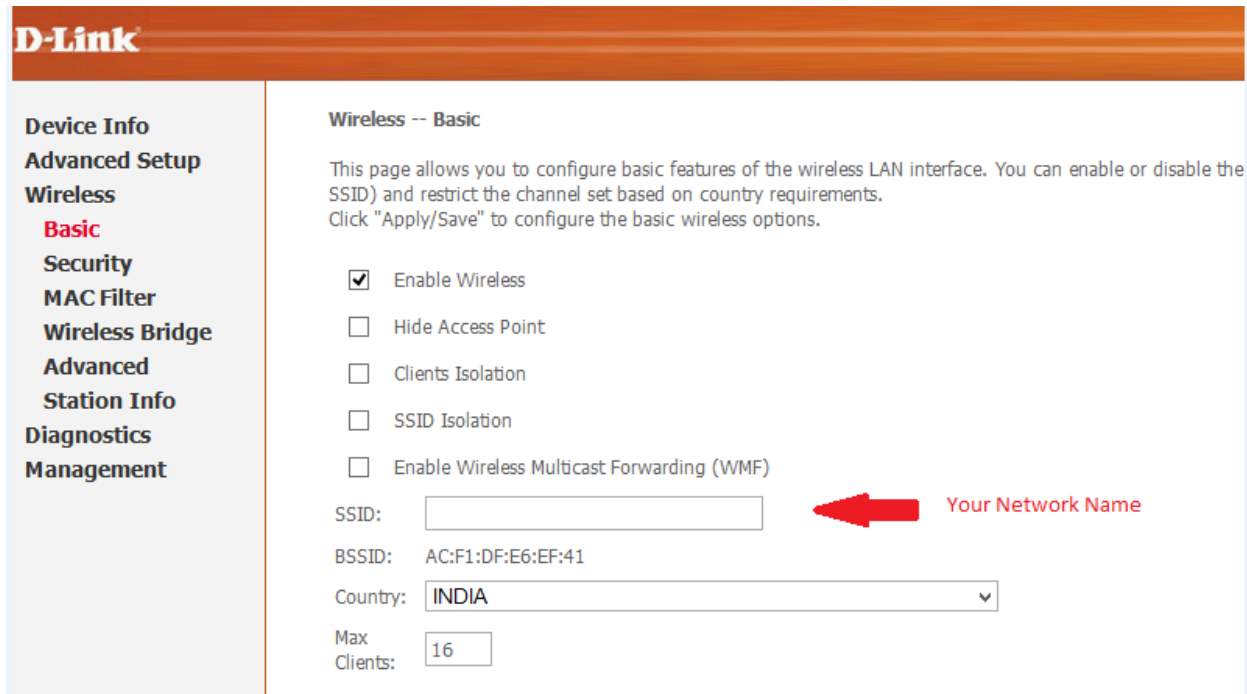


- Wireless → Edit → Change the



5. D-Link

- connect to the Wi-Fi network of your modem
- Open any browser, and enter the gateway address (the default one is 192.168.1.1)
- Username : admin / admin : access key on the back of the modem
-



D-Link

Device Info
Advanced Setup
Wireless
Basic
Security
MAC Filter
Wireless Bridge
Advanced
Station Info
Diagnostics
Management

Wireless -- Basic

This page allows you to configure basic features of the wireless LAN interface. You can enable or disable the SSID) and restrict the channel set based on country requirements. Click "Apply/Save" to configure the basic wireless options.


Enable Wireless

Hide Access Point

Clients Isolation

SSID Isolation

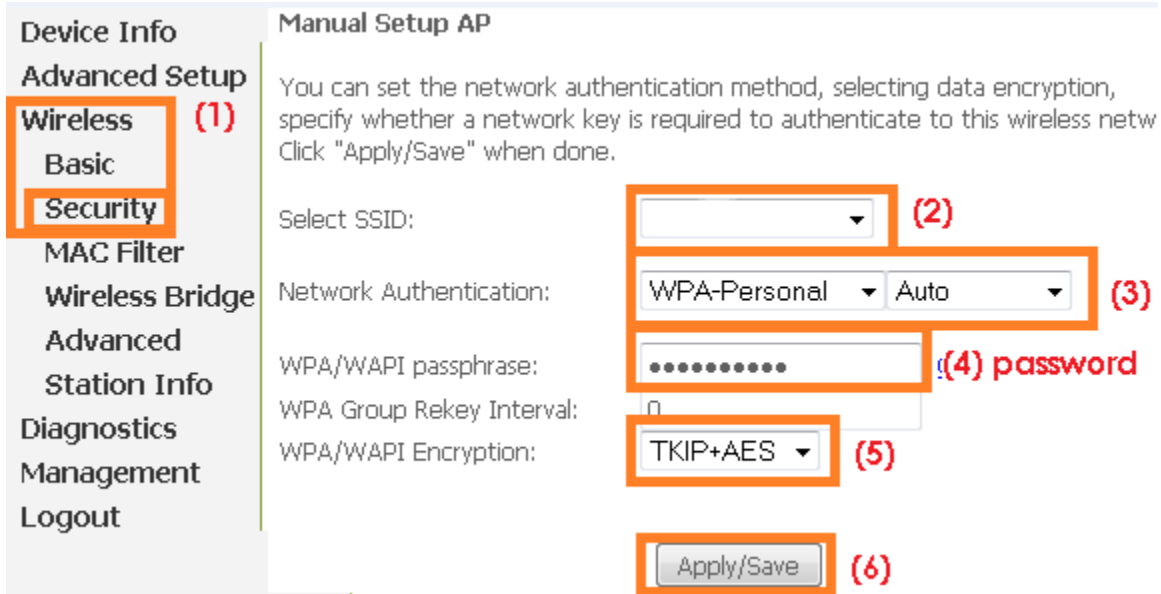
Enable Wireless Multicast Forwarding (WMF)

SSID:  Your Network Name

BSSID: AC:F1:DF:E6:EF:41

Country:

Max Clients:



Device Info
Advanced Setup
Wireless (1)
Basic
Security
MAC Filter
Wireless Bridge
Advanced
Station Info
Diagnostics
Management
Logout

Manual Setup AP

You can set the network authentication method, selecting data encryption, specify whether a network key is required to authenticate to this wireless netw Click "Apply/Save" when done.

Select SSID: (2)

Network Authentication: (3)

WPA/WAPI passphrase: (4) password

WPA Group Rekey Interval:

WPA/WAPI Encryption: (5)

(6)

6. Tp-Link

- connect to the Wi-Fi network of your modem
- Open any browser, and enter the gateway address (the default one is 192.168.1.1)
- Username : admin / admin : access key on the back of the modem

The screenshot displays the TP-Link web interface for configuring wireless settings. The interface is divided into several sections, each with a numbered callout box:

- 1. Click 'Interface Setup'**: Points to the 'Interface Setup' tab in the top navigation bar.
- 2. Click on 'Wireless'**: Points to the 'Wireless' sub-tab under the 'Interface Setup' section.
- 3. Select 'Activated'**: Points to the 'Activated' radio button under 'Access Point Settings'.
- 4. Select 'South Africa'**: Points to the 'Channel' dropdown menu set to 'SOUTH_AFRICA'.
- 5. Choose a name that you will recognise**: Points to the 'SSID' text input field containing 'Your wireless network'.
- 6. Choose 'WPA-PSK'**: Points to the 'Authentication Type' dropdown menu set to 'WPA-PSK'.
- 7. Choose a password**: Points to the 'Pre-Shared Key' text input field containing 'something people can't guess'.
- 8. Click 'SAVE'**: Points to the 'SAVE' button at the bottom of the page.

The interface also includes sections for 'Multiple SSIDs Settings' and 'Wireless MAC Address Filter', which are currently inactive.